

# Prestige® PRO 665 Elite

PRO665VXRSIBSS STAINLESS STEEL

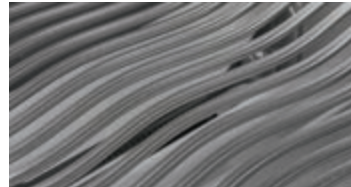


## FEATURES

- 94,000 BTU's
- 5 Main burners
- 1140 in<sup>2</sup> total cooking area
- Organized & accessible storage
- Convenient hooks & bottle opener
- Space-saving warming rack storage
- 3 Wired probes with mobile integration



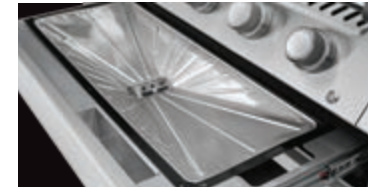
Infrared SIZZLE ZONE® side burner



9.5mm Stainless steel Iconic WAVE™ cooking grids



Built-in electric smoker box



EasyClean™ PRO Drawer with easy-access



Smart mode with intelligent gas automation



Infrared rear rotisserie burner with included high capacity rotisserie kit



JETFIRE™ 2.0 ignition



SmartGlow™ technology knobs